

## CCTV SURVEY



# Making life easier

Greenday offer a comprehensive range of drainage services for both domestic & commercial sectors



We have over 15 years experience in the inspection of sewers, pipes and ducts to identify defects and monitor the condition of the structures.

### WHAT IS A CCTV SURVEY?

With 'Closed Circuit Television', a push-rod camera is inserted into a 100mm to 150mm pipe or drain to inspect the condition of the pipe work or to determine why a drain or why a pipe blocks up. For larger diameter pipe work, a robotic crawler camera is inserted into the drain or pipe. This will carry out surveys in diameters from 150mm to 1200mm. This provides an accurate recording of the internal pipe condition for inspection and resolution.

### APPLICATIONS :

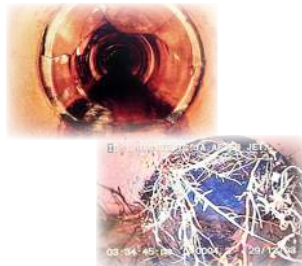
1. Inspection for any defective or deformed pipes
3. Inspection for acceptance from the Local Authority
4. Acceptance for IPPC Licence
5. Planned preventive maintenance (PPM) scheduling

### CCTV SURVEY INCLUDE :

- Results recorded on DVD
- WRC Standard reporting
- Still photos
- Site plans
- Our recommendation on how to repair any defects

### WHAT ARE YOUR TYPICAL DRAIN PROBLEMS?

- Collapsed pipes
- Deformed pipes
- Broken pipes
- Tree roots
- Poor workmanship
- 3rd party damage
- Surface damage
- Delaminating/jetting damage
- Damaged gullies and chambers



### CERTIFICATIONS

Our certifications and credentials include the following:

- ISO 9001 Certification – Quality Management
- ISO 1400 - Environmental Management
- OHSAS 18001 - Health & Safety Management
- Asbestos Awareness
- C2 registered for sub-contractors
- OS21X Brick Sewer Condition Classification, Water Training International
- Expert witness court services

### NEED MORE INFORMATION ?

Greenday Environmental Limited, Greenday House, Citylink Business Park, Old Naas Road, Dublin 12.  
Freephone: 1800-222332 - Telephone: 01-4509776 - Email: [info@greenday.ie](mailto:info@greenday.ie)  
[www.greenday.ie](http://www.greenday.ie)